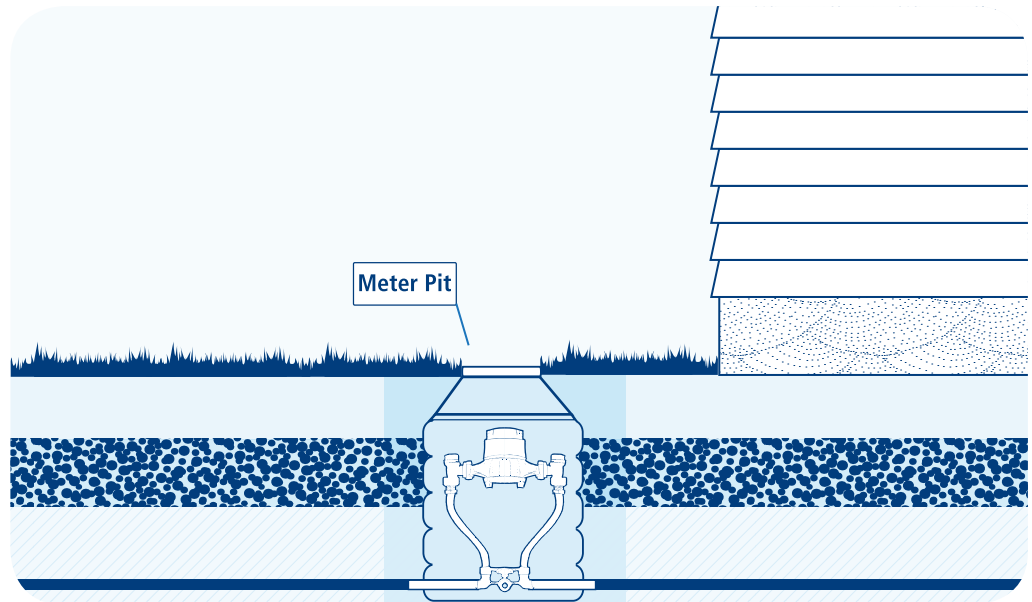


Water METER

In most properties, indoor water meters are located near the front wall of the building. In some cases, meters are located outdoors in meter pits or frost boxes. To protect them from winter frost, the pits are at least four feet deep. Frost boxes have double layer lids to help insulate them from the cold. The majority of Aqua meters are straight dial reads, similar to an automobile odometer. Most meters measure in gallons and some measure in cubic feet.



If you have an emergency and cannot shut off your master valve, call Aqua's emergency number (877.WTR.AQUA) for help.